



## Product Specification

Full Color Asynchronous Controller Card

HD-A30/A30+

## System Overview

HD-A30 / A30 + Asynchronous Cascade Control System is a remote control and offline HD video LED control system for small pitch LED advertising screen. Composed of asynchronous sending card HD-A30 / A30 +, receiving card R500 / R501 and control software HDPlayer three parts.

A30 / A30 + has video playback, program storage, parameter settings and other functions. At the same time, A30 itself can also be a receiving card, so that the entire system can save a receiving card.

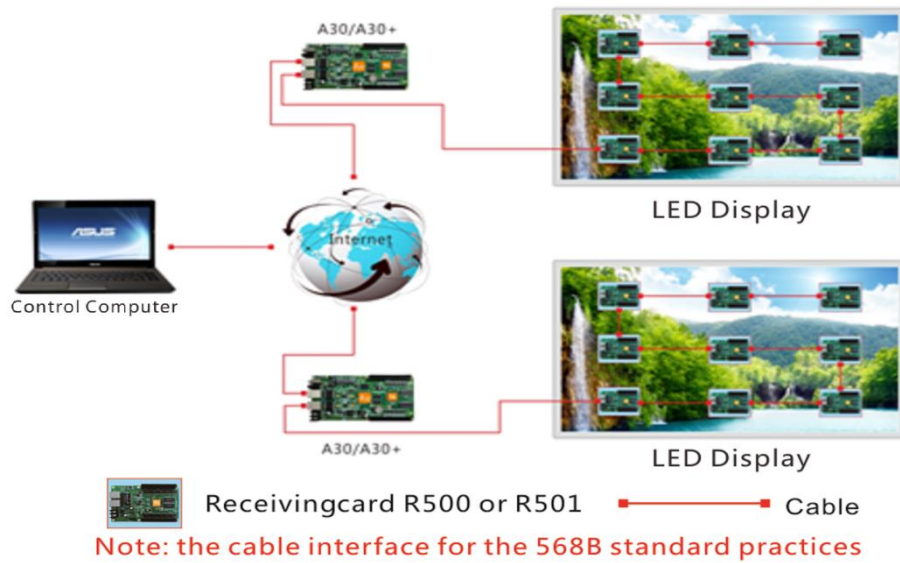
R500 / R501 is the receiving card working with sending card or sending box, to display LED screen scan. At the same time, the A30 + also supports new generation receiving card of Linsn and Color Light.

User can use the HDPlayer to complete the display parameter settings and program editing or sending.

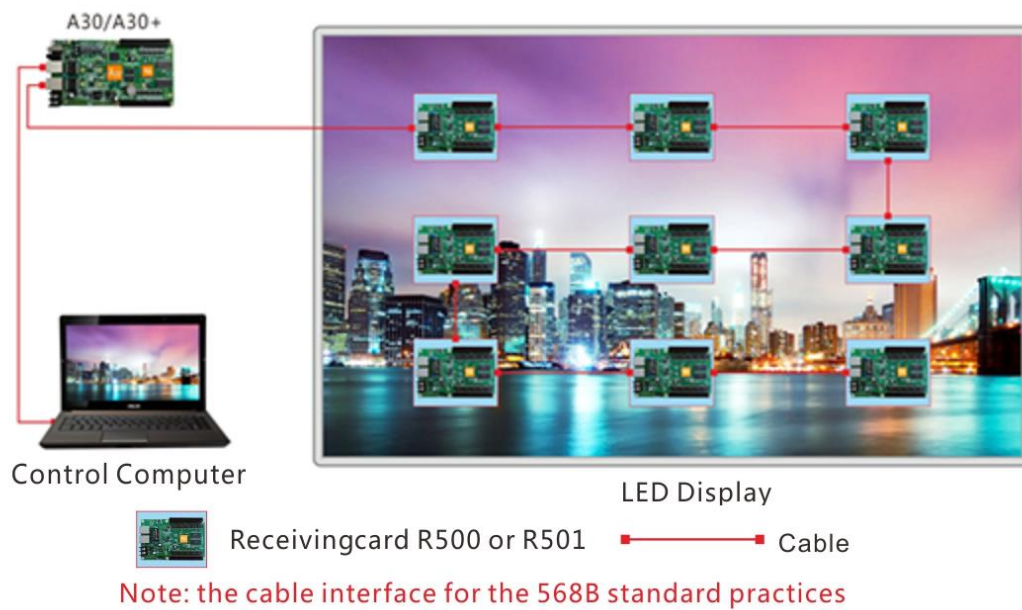
## Controlling System Configuration

Product	Type	Functions
Asynchronous Controller Card	HD-A30/A30+	Asynchronous core parts It has 4GB memory.
Receiving Card	R500/R501	Connected with screen, Showing program in Screen.
Control Software	HDPlayer	Screen parameter settings、edit the program、send program , etc.
Accessories		HUB、 Network cable, U disk、 etc.

## Application scenario



Unified Management of More Led Display through Internet



One Display--- Connected to Computer and Control Card by Network Cable

Note: Each screen only using one A30 / A30 + card, the number of received cards is depends on the screen size.

## Program features

---

- 1) Support Indoor & outdoor full-color& single/dual color module&Virtual module;
- 2) Support Video, Animation, Graphics, Images, Text, and etc.;
- 3) Support 0~65536 gray level;
- 4) U-disk to infinitely expand the memory storage, U-disk plug-and-play;
- 5) Support Standard two-track stereo output;
- 6) No need set IP, HD-A30/ A30+ could be identified by controller ID automatically;
- 7) Support network cluster management and Internet/3G remote management.

## System function list

---

Gray Scale	0-65536
Program update	Directly connected to the computer, LAN, public network, U disk, mobile hard disk
Basic functions	Video、 Pictures、 Gif、 Text、 office、 Clocks、 Timing 、 etc; Remote、 Temperature、 Humidity、 Brightness 、 etc.
Video format	AVI, WMV, MP4, 3GP, ASF, MPG, FLV, F4V, MKV, MOV, DAT, VOB, TRP, TS, WEBM, etc.
Image format	BMP, GIF, JPG, JPEG, PNG, GIF,PBM,PGM,PPM,XPM,XBM etc.
Text	Text editing、 Image、 Word、 Txt、 Rtf、 Html、 etc.
Document	DOC、 DOCX、 XLSX、 XLS、 PPT、 PPTX、 etc.Office2007Document format
Time	Classic Analog clock, digital clock and various of clock with image background
Audio output	Double track stereo audio output

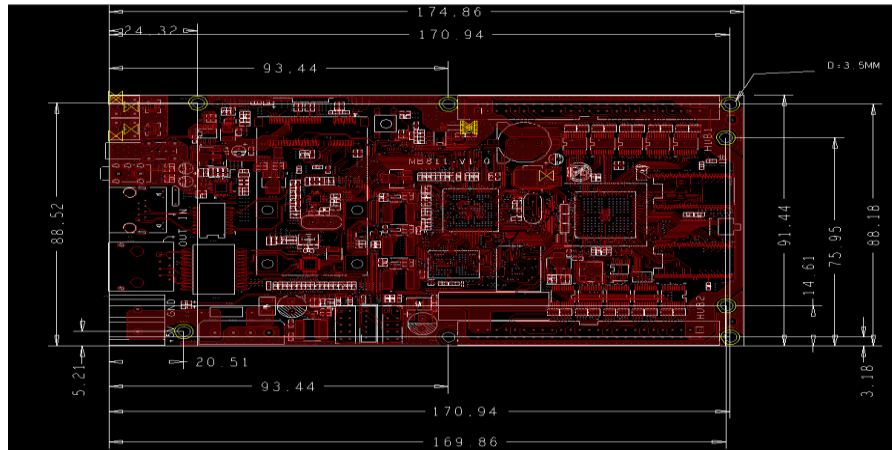
Memory	4G Flash memory; Indefinite expanding of U-disk memory.
Communication	10/100M/1000M RJ45 Ethernet;3G/4G;Internet;LAN
Clock function	1、calendar, analog clock, lunar calendar ; 2、timing, countdown display; 3、font, size, color, location, etc. can be arbitrarily set; 4、multiple time zone display
Extended Equipment	Remote、Temperature、Humidity、Brightness 、etc.
Automatic switch screen	timer switch
Brightness adjustment	three brightness adjustment modes

## Model Selection Reference

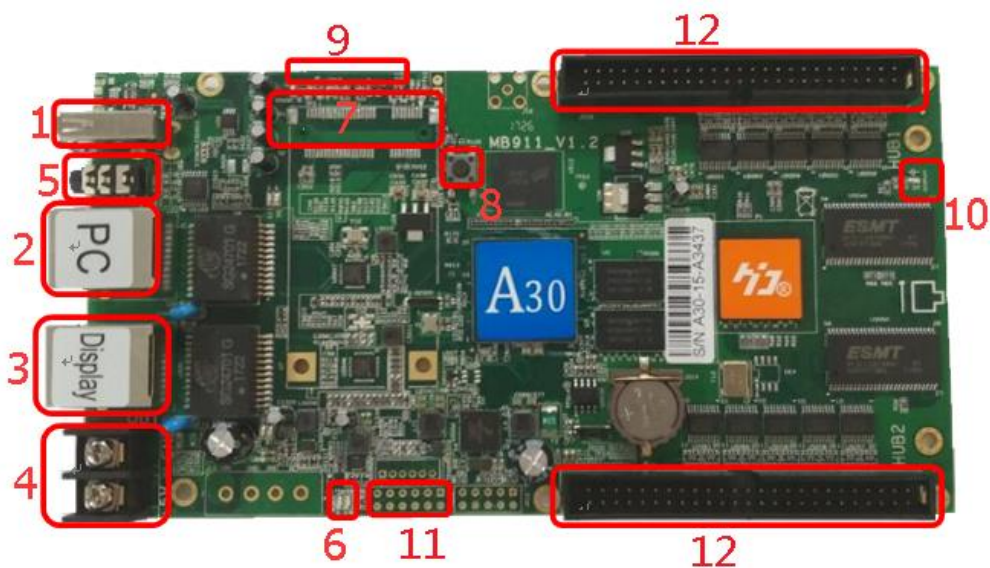
Model	Control range Pixel ( Width*Height )
<b>HD-A30</b>	1024*512, 512*1024  (Itself also can be working as 1Pcs receiving card)
<b>HD-A30+</b>	1024*512 , 3840*136 , 256*2048  (Itself can't work as receiving card)
<b>R500</b>	Suggest: 256*256
<b>R501</b>	Suggest: 256*256

## Dimension Chart

HD-A30/A30+:



## Appearance Description



①: USB port, connected to USB device, e.g. U-disk, Mobile hard disk 、 etc.;

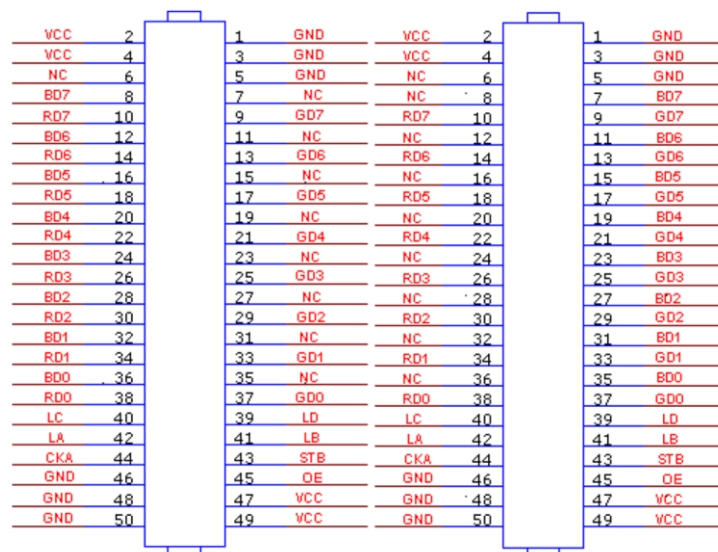
- ② : Input network port, 1000M network port, working status: D13 green lamp normally on, D9 green lamp flicker;
- ③ : Output Network port, 1000M network port, working status: D11 green lamp normally on, D2 green lamp flicker;
- ④ : Power Supply port, 2 Pin Power supply terminal connected to 5v power supply;
- ⑤ : Audio output port, support standard two-track stereo output;
- ⑥ : Power lamp-D4 green, working status: Normally on, Run Lamp-D17 green, working status: Flicker;
- ⑦ : 3G model port;
- ⑧ : Test button; after smart setting, each press will appear red, green, blue, white, shaded test line sequentially; (only after storage the configuration parameters of the card and screen-matched, then unplug the LAN cable, will the test button work) ;
- ⑨ : SIM Card slot, inserted with 3G/4G card for 3G/4G internet solutions;
- ⑩ : Display lamp-D7 green, working status: Flicker;
- ⑪ : J11 supports welding sensor box, brightness sensor, temperature sensor;
- ⑫ : 50pin row needles port, connected to various screen through hub board

Note: A30+ has not this kind of port.

## Interface definition

---





General Full Color Port1

General Full Color Port 2

## Technical Parameters

	Minimum	Typical value	Maximum
Rated voltage (V)	4.2	5.0	5.5
Storage temperature(°C)	-40	25	105
Work environment humidity (°C)	-40	25	80
Work environment humidity (%)	0.0	30	95

## Precautions

- 1) To ensure that the control card is stored during normal operation, make sure the battery on the control card is not loose;
- 2) In order to ensure the long-term stable operation of the system; please try to use the standard 5V power supply voltage.