

## Product Specifications

Full Color Asynchronous Controller Card

D10

V3.0 20170901

## System Overview

HD- D10 Full Color Asynchronous Controller System is a LED control system that supports mobile APP control, Web remote control and offline play HD Video.

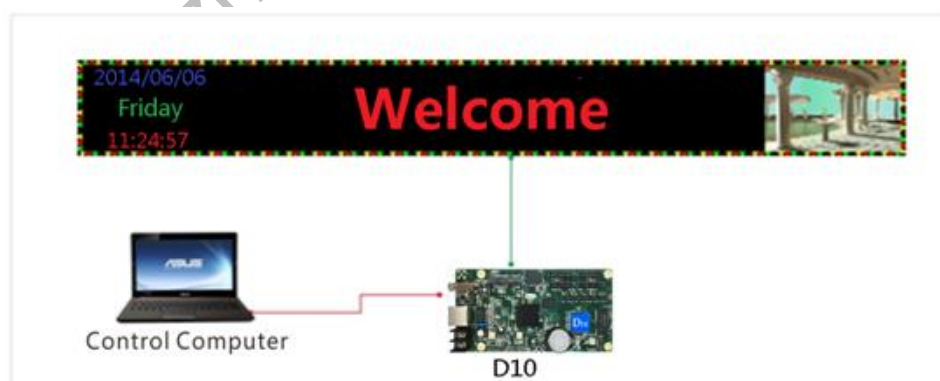
Supporting computer control software HDPlayer, mobile phone control software LedArt and HD technology clouds management platform.

## Application scenario

1. Control card can be connected with the router, the Internet cluster management diagram is as follows;



2. The control card can be connected directly with the computer, as shown below;



3. Update program can be used in addition to cable D10 connection, but also through the U disk or removable hard disk.

## Features

---

1. Support all kinds of door full-color module;
2. Control Range: 384\*64 ;
3. Support 256+ (8bit) gray level;
4. Support the word art, animation background, neon light effect;
5. U disk unlimited expansion program, plug in broadcast;
6. No need set IP; HD-D10 could be identified by controller ID automatically;
7. Support 3G/4G/Wi-Fi/ and network cluster management remote management.

## System function list

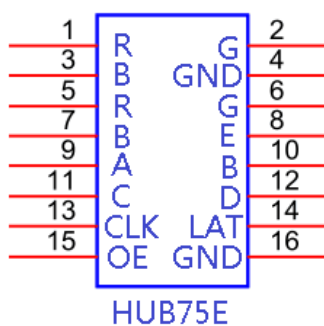
---

Module type	A variety of full-color module
Control Range	384*64,512*48,192*128
Gray Scale	256+
Video Formats	Support 1080P HD video hardware decoding, direct transmission, without transcoding waiting; AVI, WMV, MP4, 3GP, ASF, MPG, FLV, F4V, MKV, MOV, DAT, VOB, TRP, TS, WEBM, etc.
Animation Formats	SWF、FLV 、GIF
Image Formats	BMP、JPG、JPEG、PNG etc.
Text	Support text message editing, inserting picture;
Time	analog clock, digital clock and a variety of dial clock functions
Other function	Neon, animations function; Clockwise/counter-clockwise count; support temperature and humidity; Adaptive brightness adjustment function
Memory	4GB Flash , more than 4hours'program support. Indefinitely

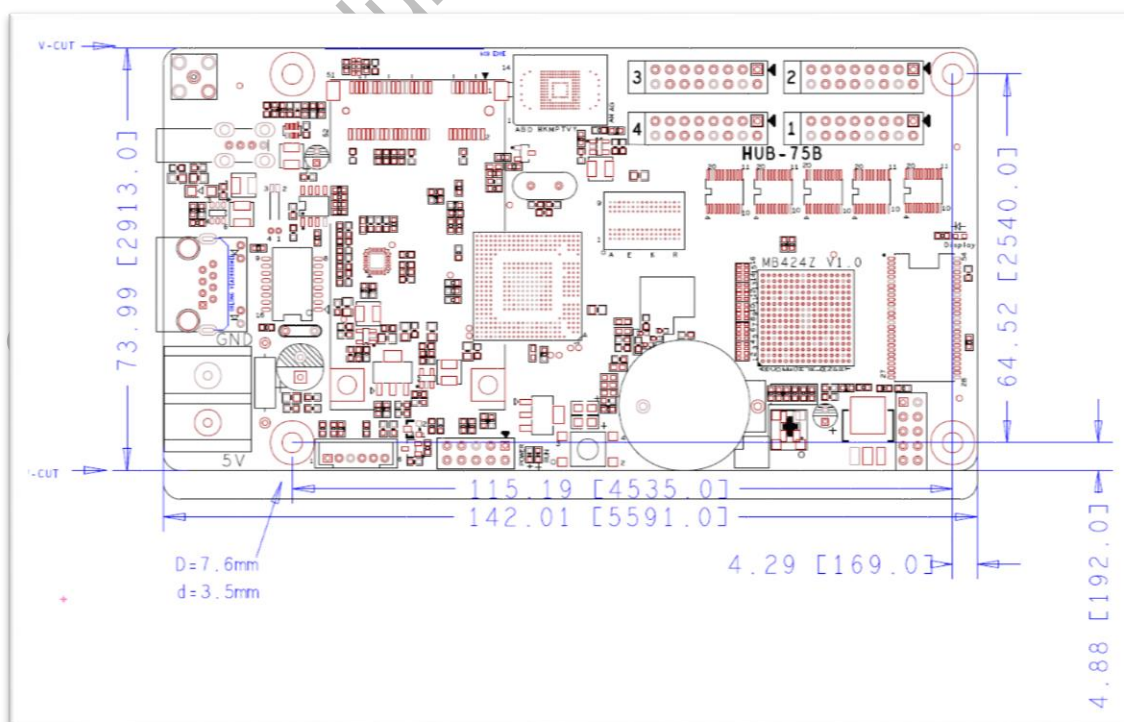
	expanding memory by U-disk;
Communication	U-disk; Wi-Fi; LAN/3G/4G/WiFi.
Port	5V Power x1, 10/100M RJ45 x1, USB 2.0 x1, 4Port of HUB75E
Software	HDPlayer

## Interface definition

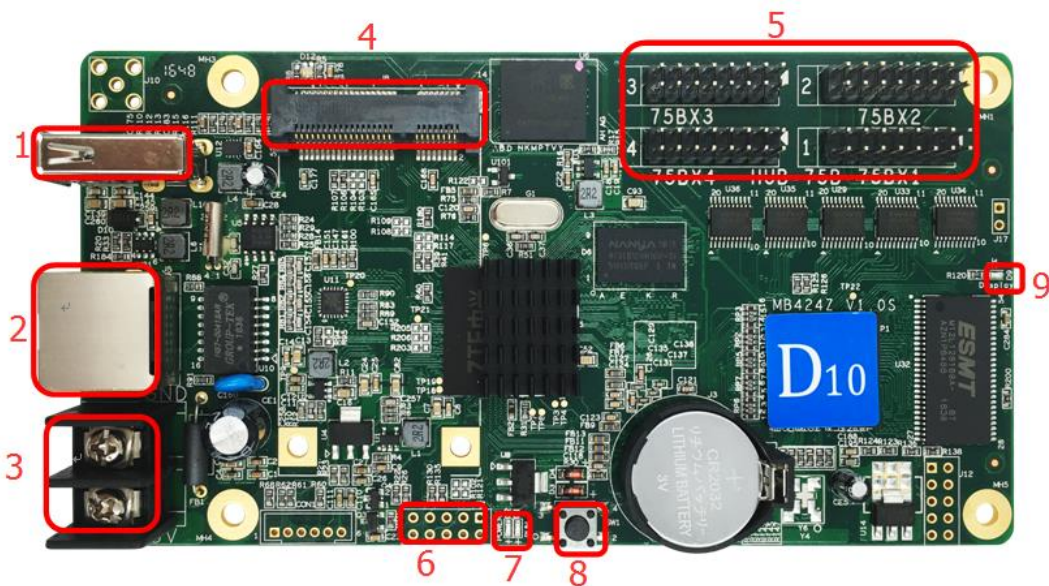
Support 4 groups HUB 75E parallel data are defined as follows:



## Assembly drawing



## Interface Explanation



①：USB port, connected to USB device, e.g. U-disk, Mobile hard disk 、etc.

②：RJ45 network port, and the computer network port, router or switch connected to the normal working state is orange light is always on, green light flashes;

③：Power terminal, connect 5V power;

④：MINIPCIE, connect 3G/4G module or WIFI module (optional) ；

⑤：4×16PIN, HUB75E, connect LED screen;

⑥：External sensor;

⑦： Power indicator light and running light (left power for the power light, run the right run indicator), normal working state: power is always on, run flashes;

⑧： Test button, adjust the screen, the button test LED screen is dead;

⑨： Display indicator (Display), normal working state: flashing.

## Technical Parameters

---

	Minimum	Typical value	Maximum
Rated voltage (V)	4.2	5.0	5.5
Storage temperature(°C)	-40	25	105
Work environment humidity (°C)	-40	25	80
Work environment humidity (%)	0.0	30	95

## Precaution

---

- 1) To ensure that the control card is stored during normal operation, make sure the battery on the control card is not loose;
- 2) In order to ensure the long-term stable operation of the system; please try to use the standard 5V power supply voltage.